



ic3D

Quick Start

Carton Fold Up



Select Edge
selects edges of the carton dieline



Drag to Move Points
selects edges of the carton dieline



Add Line
creates new edge



Zoom
zoom view upon click



Zoom by Selection
zoom view around selection box



Fit to Screen
zoom view around selection box



Pan View
moves view by clicking and dragging



Rotate Dielines
moves view by clicking and dragging



Undo
step one action back



Redo
step one action forward



Delete Selected Line
deletes selected edge



Break Apart Selected Line
splits edge into two parts



Join Selected Lines
joins two edges into a single edge



Select Front face
split edge into two parts



Split Selected Lines
sets orientation to carton

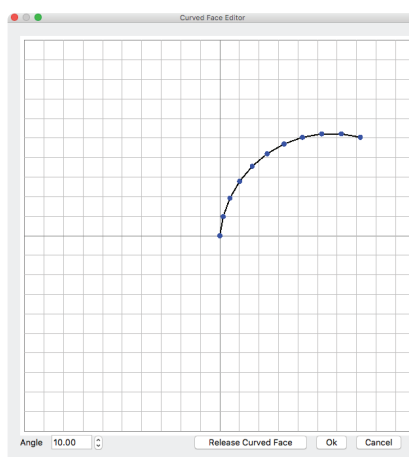


Split Face
cuts face into even sections



Curve Face
curves face from a selected fold line and opens Curved Face Editor for more accurate folds

Curved Face Editor →



Set Selected Line as Unused
assigns edge as unused edge



Set Selected Line as Cut
cut lines will split the dieline at the edge



Set Selected Line as Fold
fold lines can be folded by any degree between (-180° - 180°)



Set Selected Line as Crush Fold
Crush folds adds seamless artwork transition over the edges of thick substrates



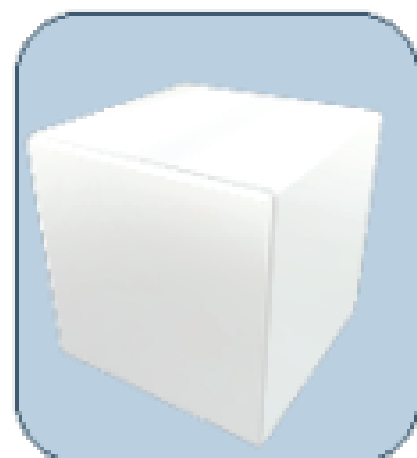
Set Selected Line as Linked Fold
Linked fold sets two separate folds that are co-linear as one fold



Set Selected Line as Bridge Fold
bridge folds allow a fold to be cut while retaining a visible connection between the cut



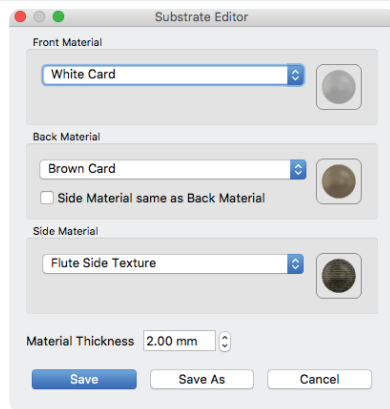
Show or Hide Errors
show/hide errors in dieline



Carton Fold Up



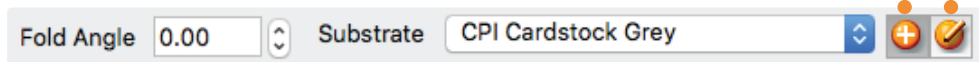
Carton Fold Up



ic3D

Quick Start

Carton Fold Up II



Controls angle of selected fold

Selects pre-saved substrates

Create new substrate

Edit Current

Both options open Substrate Editor

Clear

Erases the scene

Import Dieline

Import Dieline from file

Load

Loads pre-made .ctd file

Save

Saves current dieline as a .ctd

Hide Preview

Hides preview window

Split Lines

Cuts dieline into assignable edges

Generate Model

Creates Model

☐ Use Legacy

Reverts Carton Fold up to a non-curved folding environment.

☒ Scale Curved Faces

Scales for the natural compensation of a Curved Face

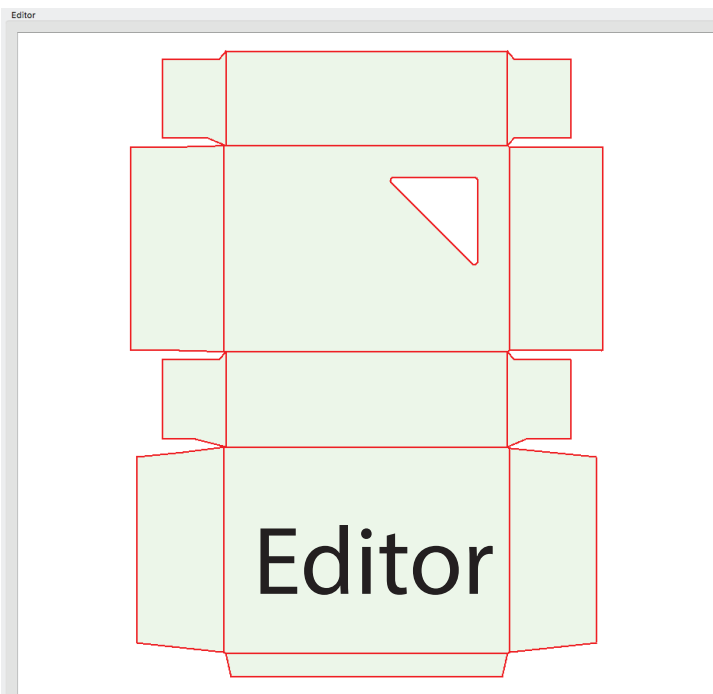
This option may need to be turned off in certain curved folds due to small differences between real-world cartons and the 3D representation.

Add Model to Scene

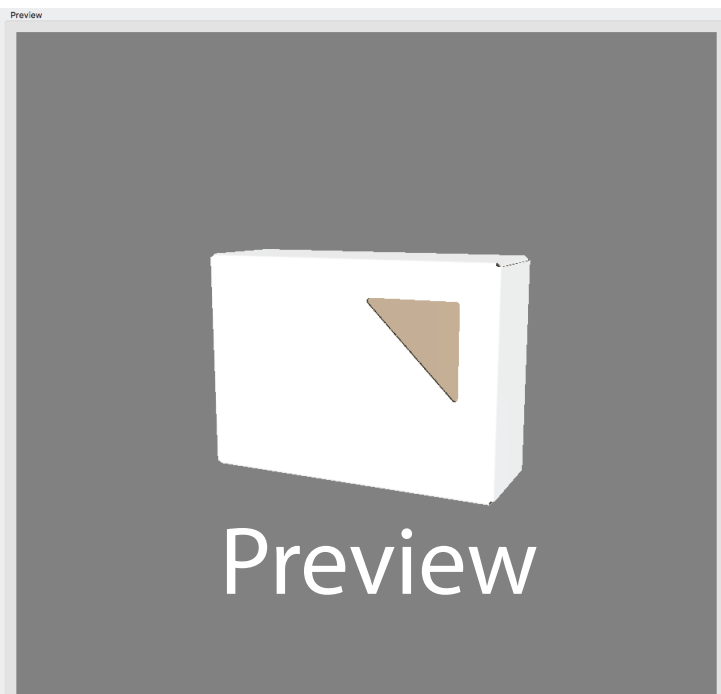
Closes Carton tool and adds to scene

Cancel

Cancel & Close



Editor



Preview